

REPORT NO.: 161-02769-00-07

ARBORG BIFROST-RIVERTON SUSTAINABLE COMMUNITY ACTION PLAN

CRITICAL ISSUES BRIEF

SEPTEMBER 2017

ARBORG BIFROST-RIVERTON SUSTAINABLE COMMUNITY ACTION PLAN

CRITICAL ISSUES BRIEF

Arborg Bifrost Riverton CDC

Draft

Project No.: 161-02769-00-07

Date: September 2017

WSP

111-93 Lombard Ave
Winnipeg, MB R3B 3B1

Phone: 204-943-3178

Fax: 204-943-4948

www.wspgroup.com



TABLE OF CONTENTS

1	INTRODUCTION.....	1
2	FOCUS GROUPS AND COUNCIL WORKSHOPS	2
3	PUBLIC WORKSHOP AND OPEN HOUSE.....	3
4	SENIOR AND YOUTH ENGAGEMENT	4
5	CRITICAL ISSUES	5

APPENDICES

- Appendix A – Focus Group Presentation
- Appendix B – Recorded Discussion Notes
- Appendix C – Table Maps
- Appendix D – Open House Newspaper Advertisement
- Appendix E – Open House Presentation Storyboards
- Appendix F – Questionnaire
- Appendix G – Youth Questionnaire

1 INTRODUCTION

This Critical Issues Brief is one of four documents that support the Arborg Bifrost-Riverton Sustainable Community Action Plan (the Plan). It presents key findings from the public engagement component of the project, the intent of which was to *meet, explore, listen and learn* and involved the consultant team taking a windshield tour of the area, holding three community focus groups, individual workshops with the municipal councils, two public workshops, and two open houses. The focus groups were held in the Town of Arborg and Village of Riverton and brought together a diverse group of community leaders from the Town of Arborg, the Village of Riverton, and from the wider Bifrost-Riverton municipality which comprise the Plan Area. The workshops and open houses were held in the Town of Arborg and Village of Riverton and provided an opportunity for community residents and interested persons to share their ideas for improving the sustainability of Arborg Bifrost Riverton.

2 FOCUS GROUPS AND COUNCIL WORKSHOPS

The intent of the focus groups and council workshops were to meet with elected officials and invited residents representing a cross-section of the Bifrost-Riverton and Arborg communities. The project team learned firsthand the local concerns, issues and aspirations of the community. The open discussion also provided an opportunity for everyone in the room hear from each other. The information from the meetings will be used as a basis for identifying issues that the Plan can address within the social, economic and environmental framework of the Plan.

The focus groups began with introductions and a presentation on the project background and intent of the Plan (**Appendix A**) followed by round-table exercises and group discussions (**Appendix B**). The events focused on the identification and cursory examination of the Strengths, Weaknesses, Opportunities and Threats affecting the Social, Economic, and Environmental aspects of the Arborg and Bifrost-Riverton communities. The council workshops followed a similar format but expanded the discussion to include governance issues under the following broad headings: Political/Jurisdictional, Legal/Regulatory, and Technology/Infrastructure. Participants were also encouraged to markup maps of the Arborg and Riverton communities and Bifrost-Riverton municipality with any key regional features or development opportunities and constraints identified over the course of the discussions (**Appendix C**).

3 PUBLIC WORKSHOP AND OPEN HOUSE

The public workshop and open house provided the community residents and interested persons an opportunity to voice their needs, desires and goals, speak with project team members, and provide their input into the Plan. The events were planned for the same day and concurrently to help accommodate those who were interested in participating in a workshop as well as those who prefer to just drop-in. The events were advertised in the local newspaper (The Interlake Enterprise) (**Appendix D**) and on the Town of Arborg and Village of Riverton websites. The format of the workshop included a 20 minute presentation followed by a question and answer period. The open house was drop-in format with presentation storyboards (**Appendix E**) displaying text and graphics on the project background and the Plan Area, the purpose and benefits of a sustainability community action plan, and the project timeline. The region's strengths, opportunities, weaknesses and threats which emerged from the focus groups and council workshop were presented. Workshop and open house attendees were asked through a questionnaire (**Appendix F**) to share their ideas for how the region can work towards sustainability. Following the open house, the presentation materials and questionnaire were posted online for two weeks. This provided an opportunity for those who could not attend the workshop or open house the opportunity to review the material and provide their input online.

4 SENIOR AND YOUTH ENGAGEMENT

Seniors and youth are two segments of society that have a lot to offer in terms of their knowledge of the past and their hope for the future, yet may not be inclined to attend a community meeting. Through targeted public engagement techniques, members of the planning team sought out the opinions of seniors and youth to ensure that their vision and ideas for sustainability is reflected in the Plan. Project team members visited with Seniors in Arborg and in Riverton. Casual conversations about the region's assets and what should be strengthened or enhanced helped reveal local assets, issues, and priorities. A questionnaire (**Appendix G**) was developed to help engage youth in the planning process. The questionnaire asked youth to describe what they like or don't like about living in the Arborg Bifrost Riverton region, how the region can be improved, and how the region can become a better to place. The questionnaire was distributed to youth at Arborg Collegiate and Riverton Collegiate. The responses received were extremely informative of how youth of the region view their community.

5 CRITICAL ISSUES

This section lists the common issues that were identified through the public engagement process. The strengths, weaknesses, opportunities, and threats related to the social, economic, and environmental components of the Arborg and Bifrost-Riverton communities are included as well. The recorded discussion notes that the issues were derived from can be found in **Appendix B**.

SUMMARY OF CRITICAL ISSUES

The main issues that emerged from public engagement can be grouped, in no particular order, under the following headings:

- Housing (availability, choice, affordability);
- Jobs and the Economy (industries and manufacturing, agriculture, fishing, tourism, business opportunities);
- Community services and facilities (recreation, health care, social services);
- Environment (land drainage and lake and groundwater quality);
- Municipal infrastructure and roads (support and readiness for development);
- Education, employment and training; and
- Youth (current opportunities, future education and employment).

Housing

Housing was identified as an issue and most comments were related to a lack of availability, choice, and affordable options. An aging population, an increasing workforce, and more young adults interested in staying in the community are placing a strain on the existing housing stock. It was discussed that there is a need for a variety of housing types including housing for older adults, starter homes for young families, inter-generational housing, as well as demand for rental units. Comments suggest that there are opportunities for centrally located multi-family developments in Arborg and Riverton as well as an opportunity for the Town and RM to work with the development community to service lots.

Jobs and the economy

Community residents view the region's economy as stable and diverse. The main economic drivers are fishing, mining (peat), forestry, agriculture, and manufacturing with opportunities for tourism and cottage development. Due to the region's close proximity to larger urban centres (i.e. Gimli, Selkirk, Winnipeg), it can be difficult to attract employers and members of the workforce. Community residents feel that opportunities exist for the region to invest in its infrastructure and amenities to better attract and retain prospective employers and employees. For example, concerns exist that if the Town and RM do not invest in regional infrastructure such as the road network (paving roads and upgrading to RTAC standards) then manufacturing facilities will leave the region. Similarly, if more housing is not provided, the workforce will be unable to reside in the region. In addition, a number of community residents noted

that there are limited employment opportunities, especially for youth and for people with higher education. This has resulted in a lack of qualified professionals in the region.

Community residents view Arborg as the service centre for the region. The town's strengths include the business centre, credit union, post office, and shops and services including the bakery, Co-op grocery store, and hotel. The Village of Riverton has a grocery store, bakery and a few restaurants serving its residents. The loss of 'Mom and Pop' shops in the region, as well as gaps in retail stores (i.e., clothing, sporting equipment) and services to support tourism (i.e., hotels and restaurants) are viewed as weaknesses of the region. With the region's limited number and selection of shops and services, comments state that most residents shop either in larger urban centres or online and as a result, community dollars no longer stay in the region.

Community services and facilities (recreation, health care, social services)

Residents feel that the region's community services and facilities support the quality of life in the community. The Arborg-Bifrost Parks and Recreation Commission provides quite a few recreation opportunities for youth and places such as the Friendship Centre and Youth for Christ provide drop-in programming for youth.

Access to health services was identified as a weakness of the community. Although the facilities exist, residents believe that the region has struggled with retaining health practitioners. This includes optometrists, physiotherapists, and general practitioners. Efforts are made to bring in medical professionals a day or two a week but residents feel that it is important to have permanent health professionals in the community. The lack of availability of addictions and mental health services in the region is also identified as a weakness.

The region's aging population is resulting in a demand for services aimed at seniors. The services that Arborg Bifrost-Riverton currently provides to seniors include assisted living buildings, handi-transit services, and advocacy and programming. Residents view the region's efforts to provide services to seniors as a strength however there are opportunities for improvement. For example, additional health care services and assisted living units are needed.

Residents view Arborg Bifrost-Riverton as an inclusive, welcoming, and safe community to live in. The generosity and willingness of community members to volunteer their time is a strength of the region. This is demonstrated by the region's numerous service clubs and volunteer organizations, such as the Djorford Ladies Aid, Communities in Bloom/Garden Club, and Christmas Cheer Board. Although volunteerism was identified as a strength of the region, community residents shared that the same volunteers are relied upon and would like to see more people take on volunteer roles.

Environment

The environment is something that most people in the area appreciate the most. They enjoy all of the recreational opportunities that the environment provides which includes hiking, swimming, canoeing, hunting, fishing, skiing, and snowmobiling to name a few. The natural environment is something that residents enjoy and also is seen as an opportunity for recreational tourism.

Although there are many benefits of the environment, there were also concerns with flooding due to poor drainage management and excess moisture, algae blooms in the lake, pesticides getting into the water, and loss of crop land.

Municipal infrastructure and roads (support and readiness for development)

Municipal infrastructure for economic growth and residential development was a common concern. There is some serious concern that without a paved road to the manufacturing area, the manufacturing industry will eventually leave town. Coupled with this is the fact that if manufacturing wanted to grow, there are limited housing opportunities for potential employees. In addition, developers were concerned with servicing new development and the cost to service.

Education, employment and training

Community residents appreciate that both Arborg and Riverton have elementary, middle and high schools. This is a significant asset to the region, however, declining student enrollment and fewer high school graduates is a concern. It is quite common for youth to move away to pursue secondary education and local training was identified as an opportunity to help keep youth in the community.

Representatives from the manufacturing sector identified that education and training is a concern for their industry. They are having a hard time finding workers with the right skillset and it could lead to the industry having to relocate. Representatives also noted that it is hard to find accommodation for workers who move to the area.

Youth

In terms of recreation and socializing, youth generally felt that there was not much for them to do. They would like more opportunities to play sports, go shopping, hang out at a café, etc. Some youth felt that they would like to stay there because they like the community and that is where their family is and other youth felt that it is too small of a community and not enough opportunities for employment or education.

STRENGTHS/WEAKNESSES/OPPORTUNITIES/THREATS (SWOT)

The main strengths, weaknesses, opportunities and threats relating to the three sustainability components, social, economic, and environmental, identified through public engagement are as follows:

SOCIAL:

Strengths

- Strong sense of community – volunteers;
- Community organizations;
- Heritage;
- Service clubs;
- Seniors group;
- Parks and recreational programs;
- Regional offices – employment;
- Healthcare;
- Schools;
- Arts – music; and
- Cultural diversity.

Weaknesses

- Segregation between cultural groups;
- Housing availability, choice, and affordability;
- Access to health services;
- Public transportation;
- Political leadership; and
- Activities for all age groups.

Opportunities

- Bring people back to the community;
- Seniors services;
- Underutilized school space;
- Cottage country;
- Healthcare and transportation;
- Education;
- Access to the river;
- Community grants; and
- Designated a Manitoba Tourism star attraction.

Threats

- Doctors want to specialize rather than be general practitioners;
- Farmers are aging;
- Harder to make a living being a small farmer (under 1000 acres);
- Loss of young people;
- Larger municipalities such as Winnipeg;
- Water quality; and
- Volunteer exhaustion.

ECONOMIC:

Strengths

- Agriculture;
- Manufacturing;
- Commercial fishing;
- Interlake service/business centre;
- Hydro and MPI regional offices;
- Assisted living and personal care homes;
- Diverse – fishing, mining (peat), forestry, agriculture, manufacturing;
- Training centre;
- Gateway to the north;
- Tourism – cottage development, fishing, and hunting;
- Beaches;
- Community futures office; and
- Local banks understand local issues.

Weaknesses

- Affordable and rental housing;
- Proximity to Winnipeg;
- Councils compete with each other for resources;
- Limited labour force;
- Reliable internet and cell service;
- Infrastructure - road is not paved to manufacturing area, road bans on hauling roads, limited natural gas capability; and
- Declining local businesses.

Opportunities

- Tourism;
- Online business;

- Cottage development;
- Infill development;
- Personal care home;
- Working with colonies;
- Housing; and
- Natural environment.

Threats

- Excess moisture;
- Manufacturing leaving;
- Diminishing tax base;
- Global market – tax incentives and low labour fees;
- Limited labour force;
- Land holdings with no plans for development;
- Infrastructure – water;
- Political conflict; and
- Online shopping.

ENVIRONMENTAL:

Strengths

- Icelandic River;
- Clean air;
- Year round outdoor recreation; and
- Hunting and fishing.

Weaknesses

- Flooding and poor water management; and
- Lack of sidewalks.

Opportunities

- Icelandic River;
- Communication/marketing;
- Creating trails from unused railway;
- Unopened farmland;
- Harvesting algae;
- Recreational tourism;
- Farmer's market; and
- Fish by-product – fertilizer.

Threats

- Zebra mussels;
- Algae blooms;
- Unpredictable soil conditions for farming;
- Drainage - excess moisture;
- Expensive to construct wetlands;
- Water quality;
- Pesticides; and
- Arborg wastewater.

Appendix A

FOCUS GROUP PRESENTATION

ARBORG BIFROST-RIVERTON SUSTAINABLE COMMUNITY ACTION PLAN

FOCUS GROUP



Agenda

- Introductions
- Background Presentation
- Engagement Activity



Outline

- Project Background
- Sustainable Community Action Plans
 - About
 - Purpose
 - Benefits
- Project Timeline
- Questions



Project Background

- The Arborg-Bifrost Community Development Corporation (ABCDC) together with the Municipality of Bifrost-Riverton and the Town of Arborg have come together to undertake a Sustainable Community Action Plan and have engaged WSP | MMM Group to lead the planning process.
- With the recent amalgamation, preparing a Sustainable Community Action Plan provides an opportunity for establishing a shared vision for the municipal partners and for working together in areas of common interest.
- The ultimate goal is to help Arborg & Bifrost-Riverton strengthen its position as one of the most self-reliant, progressive, and economically stable regions of the province.

Project Background

- This plan will build on the goals of the Eastern Interlake Planning District Development Plan and will contribute to the development of a cohesive approach to coordinating the different initiatives, plans, programs and activities currently underway in the region.
- The plan is funded in part by the Federation of Canadian Municipalities (FCM) Green Municipal Fund.

About

- A Sustainable Community Action Plan is a long term plan developed in order to establish direction for future sustainable practices aimed at enhancing the quality-of-life and well-being of current and future generations.
- The plan is based on a model of sustainability and integrated community planning. Sustainability objectives and existing plans and initiatives are integrated into a common vision with goals and actions aimed at its successful implementation.
- The plan will reflect the region's ideas and priorities and can be used to guide short, medium, and long-term decision making.



Purpose

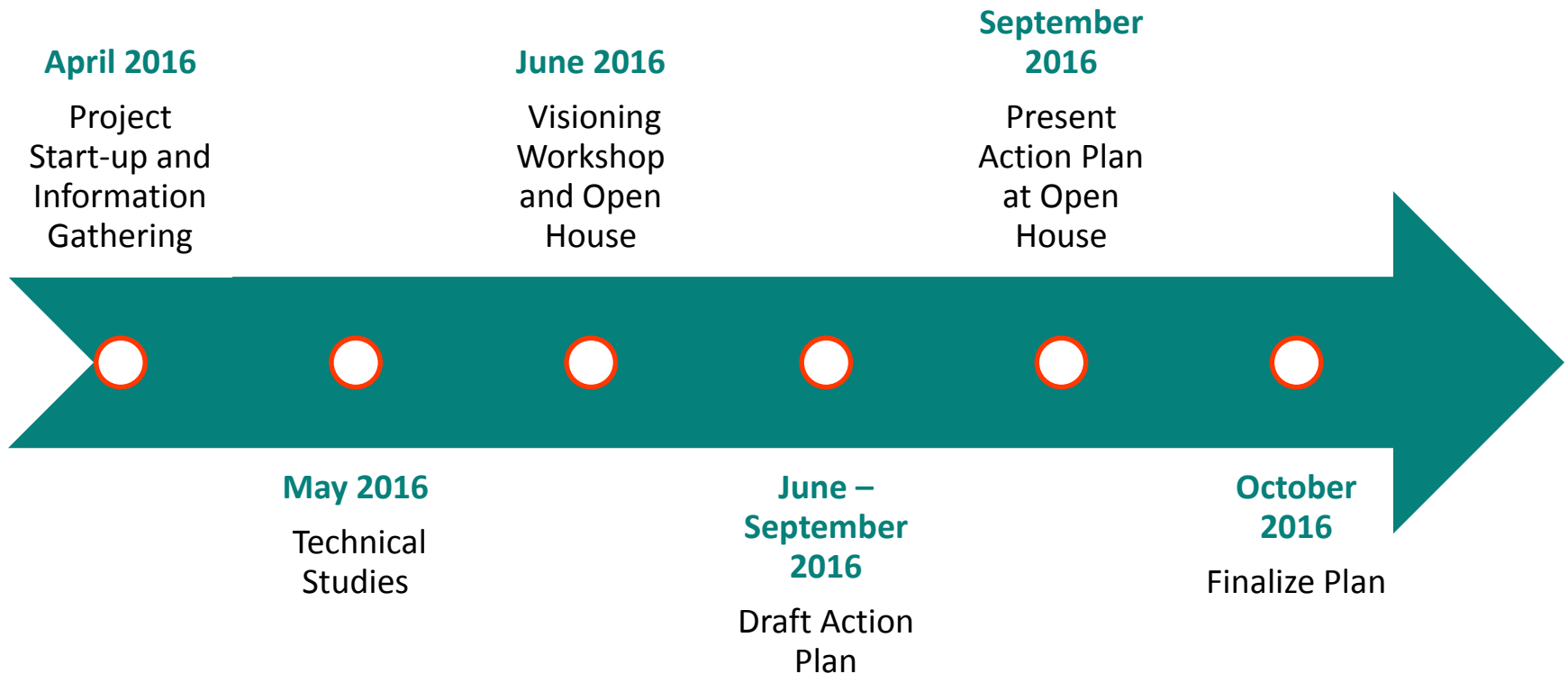
- The purpose of the Bifrost-Riverton Arborg Sustainable Community Action Plan is to evolve a coordinated approach to sustainable growth and development across the region.
- This will be accomplished by:
 - Actively seeking the opinion and involvement of interested and/or affected individuals in order to gather information, formulate planning policy, and create a sense of pride and ownership.
 - Establishing a clear vision for the sustainable future of the region.
 - Coordinating existing strategies, initiatives and actions, to provide a harmonized approach to growth and development.
 - Identifying strategies, initiatives, and actions which a community can implement in moving towards a more sustainable way of growing.
 - Identifying targets for measuring progress towards achieving specific goals and objectives within the sustainability areas.

Benefits

A Sustainable Community Action Plan comprehensively addresses:

- Growth management
- Self-sustainability
- Preservation of agricultural lands and natural areas
- Opportunities for economic resiliency
- Servicing and infrastructure cost savings
- Health and well-being of residents
- ...and more

Timeline



Focus Group Format

- As a group, we will identify the Strengths, Weaknesses, Opportunities, and Threats (SWOT) of the following areas:
 - Social
 - Economic
 - Environment
 - General / Others
- Mapping Exercise

Social

Strengths	Weaknesses	Opportunities	Threats

Economic

Strengths	Weaknesses	Opportunities	Threats

Environmental

Strengths	Weaknesses	Opportunities	Threats

Others?

Strengths	Weaknesses	Opportunities	Threats

Questions?



Thank You

Thank you for your participation.

Your input will be used to assist in the development of the Sustainable Community Action Plan

To receive project updates and invitations to future engagement events, please contact:

Ross Mitchell, 204-470-4802, ross.mitchell@wspgroup.com,
or

Brock Feenstra, 204-943-3178, feenstrab@mmm.ca



Appendix B

RECORDED DISCUSSION NOTES

SOCIAL

Strengths

- Strong, steady growth – population
- Diverse, multi-cultural
- Heritage Village
 - In the last 10 years it has received approx. \$500,000 in grants
 - Employs four summer students a year
- Aging population - demand for services
 - Planning for seniors needs
- Recreation
- Lots of youth involved in music
 - Arborg and Riverton share a music teacher
 - There is a winter concert in Riverton and a summer concert in Arborg
- Multi-faith youth centre
- Community
 - Interconnectedness
 - Inclusive, welcoming
- Ukrainian dance festival – connected with newcomer family
- Generosity – taking care of each other
- Volunteers – ESL
- Service clubs
- Safe community
- Djorford Ladies Aid
- Senior group
- Parks & Recreation programs
- Natural Resources Office here
- Transportation – industry
- Handy van
- Getting students in from remote communities
- Clinic, pharmacy, 24 hour ambulance
- Hockey and curling
- Church network
- Heritage
- Public – hall, curling, skating rink
- Senior – assisted living

- Businesses
- Strong belief
- Elks
- Chambers of Commerce
- Food bank
- Schools – K-12
- Lots of volunteers
- Strong music history
- Friendship centre
- Diversity – aboriginal, Ukrainian, Icelanders
- Daycare
- Street festival in August
- Strong citizens – no Kinsmen or others
 - Good turnover on boards
- Arborg Agricultural Society
 - Youthful – The Agricultural Festival and Arborg Rodeo is organized by a group of young people
- Communities in Bloom

Weaknesses

- No service groups
 - Kiwanis or Kinsmen etc.
- As diverse as the community is, there is some segregation/lack of involvement
- Health care – have bricks and mortar but no practitioners
 - Get “IGM” students
- Lack of doctors in the Interlake
- Few opportunities for all demographics
 - For youth there are some, but not every day
- Need to travel for additional activities i.e. cadets (air)
- Emergency healthcare
 - Which room is open?
 - Hospital in Arborg and Gimli
 - Quick care clinic in Riverton – Doctor in 1 day, nurse practitioner in 3 days
- Small business centre
- Lack of focus or ability to create opportunities
- Conveniences of a city for professionals
- Lack of affordable housing

- Lack of adequate rental housing
 - Starter homes – generational housing
 - Volunteers stretched too thin
 - Stronger public advocate system
 - Inform citizens of programs
 - Housing
 - Student
 - Mental health worker, doctor is 2 days/week, primary health care is 3 days/week
 - Declining enrollment
 - Access to health services in the school and town
 - Addictions
 - Mental health
 - If you can't see the crisis team there are no places to go
 - No support for parents
 - No opportunity to share information
 - Running out of families to board students
 - Isolated communities
 - Students come from the east side of the lake
 - Nothing for teens to do
 - No public transportation
 - End of the highway – final destination
 - Lack of leadership
 - Council is hopeless
 - No direction
 - Lack of confidence
 - No facilities to grow
 - i.e. Water treatment
 - Doctor services
 - Employment and Income Assistance is in Selkirk
 - No food bank – supposed to be one
 - No service clubs left
- Opportunities**
- Seniors services
 - Healthcare
 - Underutilized school space

- Enrollment
 - Kids are home schooled
 - Some schools only have 100 kids
- High school has metal and wood shop and looking at getting the teacher welding certified so students can get certified while in school
- Cottage country
- Navigable waterway
- Healthcare and transportation
 - Aging population needs to get around
- Education
 - Training (healthcare)
 - Healthcare aid training
 - LPN
- School division is financially robust
- Professional jobs are available
- Work with younger generation to create entrepreneurial opportunities
- More diverse types of housing
 - Generational – starter homes, retirement
- Clinic
 - Bring in the services; the facilities are there
- Serviceable lots ready to go
- Ex-Pats – bringing back people to the community
 - Knowledge, resources, investment, raise your kids
- Social networks
 - Communicate about the region
- Riverton Reunion Days – something similar
- Access to the river
- Huge volunteer and support network
 - Community volunteers more than just hours
 - Labour donated
 - Materials donated
- Community grants
 - Individuals donating
 - Scholarships
 - West Shore Foundation

- Evergreen
- Icelandic River Foundation
- Need a rural Uber – opportunity to start a business and create employment
- Food bank
- Designated a Manitoba Tourism star attraction

Threats

- Doctors want to specialize, not be general practitioners
- Economics of scale – agriculture – age of farmers
- Can't make a living being a small farmer (under 1000 acres)
 - Most small farms are mixed
- Less disposable income might equal less paying jobs
 - Families choose 1 sport instead of 2
 - Travel costs, registration fees, equipment
 - No car
 - Work at night
- Red tape to development/risk
- Loss of young people / ability to create opportunity
- School curriculum does not allow for extra learning opportunities such as starting a business
- Water and sewer is expanded as far as it can in Arborg
- Larger communities south of Riverton
 - People go there to shop
 - Move to Winnipeg – young people
- Seniors leave cottages and move to city for health
- Lack of RCMP presence
- Closure of Municipal Office – down to 2 days a week
- Employment opportunities are limited
 - Seasonal at Parks
- Water quality
- Harder to get volunteers
 - Sometimes volunteering is project dependent
- Heritage site has one champion
 - Who would take over?
 - There is a strong board there

ECONOMIC

Strengths

- Arborg is economic hub of the Interlake for agriculture
 - 3 implement dealers in town
- Service centre
- Hydro and MPI main offices for the area are in Arborg
- Smitty's Furniture
- Arborg bakery
- Assisted living and PCH provide jobs
- Arborg is approximately 1 hour to anywhere in the Interlake
- Riverdale Place – special needs
- Grain elevator – Patterson Elevator
- Two processing plants in town – Maple Leaf Feed and Hemp Seed
- Business centre
- Rodeo
- Street festival
- Manufacturing hub
- Diversity – fishing, mining (peat), forestry, agriculture, manufacturing
- Stable – to a degree
 - If by industry closed would be a serious problem
- PCH – 80 beds – community built
- New training centre
 - Short term healthcare – long term whatever is needed
- Local banking institution – understand local issues i.e. fishing quota
 - Community involvement
- Agricultural, fishing (commercial), manufacturing
- 4 peat moss plants
- Gateway to the north
- Trades
 - Electrical
 - Plumbing
 - Mentors
- Relationship with Red River and Assiniboine for trades
- Tourism
 - Fishing and hunting

- Cottage development
- Have 600 cottage lots in the community
 - Primarily MB Conservation
 - Contribute to tax base
- Beaches
- Community futures office
 - Federal agency
- Daycare
- Highway 8
- Manufacturing
- Distance from Winnipeg
- Agricultural
- Farm dealerships
- Centralized
- Heritage Village – camping
- Aquatic Centre
 - People come camp and take swim lessons
- MPI and Hydro
- Development Incentive Plan
- Agriculture #1, Manufacturing #2
- 1.2 million ear marked to start/initiate drainage plan
 - Hadn't really been designed
 - Have Lidar
 - KGS is doing a study
 - RM needed to promise 400k this year which will get the engineering started
- Provincial economy relies on agriculture
 - Winnipeg wouldn't be here without agriculture
- Close relationship with Conservation
- Riverton has a good base of commercial fishers

Weaknesses

- Not really any “Mom & Pop” shops
 - Lost the craft post
 - Used to have 4 or 5
- Proximity to Winnipeg – people shop there
- Online shopping

- Higher paying professional services have satellite offices
- Agency nurses
- Lack of apartment style housing – rental
- Affordable housing – house, apartment, trailer park
- No real developments in town
- Town councillors and RM councillors compete with each other and require approval from each other
- RM borrows services from the town – have agreements that take a long time to negotiate
- Limited area
- Vulnerability to global economy
- Limited workforce
- Used to have a winter road that brought northern communities through town but is now on east side
- Well water is a constraint
- No water treatment
- Infrastructure
 - Road bans on roads that need to haul product
 - Limited natural gas capability and pay a premium for propane
- Reliable internet and cell service
 - Service has gotten worse
 - Dropped calls
- Lack of communication
- Paved road, to be more welcoming
- People shopping outside the community
- Commute to Selkirk for work
- No customers N and NE
 - Riverton is the edge of the market not the middle
- Loss of tracks
 - Stops in Gimli now, Riverton used to be the end of the line
- Lack of jobs for people with higher education
- Lack of qualified professionals i.e. doctors
- Not capitalizing on river
- Lack of applicants
- Industry is north of the town
- Only one grocery store – co-op – mostly food
 - No competition
 - Limited selection

- No 55+ housing
- Not enough “affordable” housing
- Developers don’t want to pay for sewer upgrades
 - Developer has subdivided land but no one wants to buy land with holding tanks
- Manufacturing N. road is Provincial road

Opportunities

- Online business
- Frieda’s Flowers
- Upscale trailer park – same as Teulon is appealing
- Developed lots ready to build
 - 25-40 K for a services lot
- Cottage development in Valhalla
- Paved road to industrial
- Infill development
- CDC position to drive the study/plan
 - Need to support the CDC Economic Officer
 - Need a regional Bifrost-Arborg-Riverton CDC
- PCH – bring jobs – need houses
- Target people to come back
- Hospitality and tourism – hotels and restaurants
 - Amazing natural area (lakes and fresh water)
- Senior services
- Retail – clothing (work, casual, etc.), sports equipment (hunting and fishing), safety
- Harbour in Riverton – beautiful bridge, area could be more developed
- Sandy Bar Road Beach
- Lake Road – could go through Sandy Bar – Heritage
- Natural gas
- Working with colonies
- Tourism
- Washow Bay
- Experiential tourism
- Agri-tourism
- Government farming
 - Growing market – lactose free
- River

- Trains
- Tourism
- Campground – N of Co-op behind the train station
 - Electrified
 - Washrooms
 - Close to the river
- Marina
- Canoeing Program
 - Partnership schools, rec
- Need to bring in people / workers
 - Housing
- Manufacturing 24/7
- Vocational programs
- Peat moss plants
- Employment services agency
- Industrial park
- Grocery store
- Other retail opportunities
- Housing
 - Rental
 - Apartments
 - 55+
- Want to know where growth can occur
- Soy beans
 - Varieties that are needed
 - Late harvest crop – risk
 - 25-30% soy now up from 0% 10 years ago
 - Expensive to process here – plant is very expensive
 - Very commercialized and tight profit margins
- Hemp plant is growing fast
- N. Riverton – turkey farmers
- Hutterite Colony nearby is probably one of the only in Manitoba or Western Canada that make cement panels
 - Starting to hire outside workers
- Have heard that there is a 70 year supply of peat moss

- Potential to capture some of the business from peat moss mining
- Opportunity to process “coarse” fish/off-products
 - Fish oil, pet food, fertilizer, food
 - Approximately 45 fishers (commercial in Bifrost-Riverton)

Threats

- Diminishing tax base
- Tax incentives and low labour fees in US
- Hard to find workers
- Dangerous goods get hauled through town because they need to take the bridge
- Government agencies are not helpful for housing development
- Land owners that hold land and don't do anything
- Global industry / economy
- Alberta economy – competing for same jobs
- Conflict between council and local business owner
- Weather
- Excess moisture
- If agriculture fails community is threatened
- 3-5 jobs in retail for 1 employee on farm
- Lack of manufacturing employees
- Manufacturing / jobs leaving
- Infrastructure
 - Water
- Number of manufacturing jobs but lack of workers
 - Lack of equipment operators
- Provincial office
 - Highways might be moved out
- Lack of one retail i.e. grocery leads to reduced retail opportunities for others
- Reduced seed sales because of crop reduction from water
- Sungrow peat moss might be moving
- A new provincial government might open the fishing market and that might hurt the small fishers

ENVIRONMENTAL

Strengths

- Icelandic River
- Clean air

- Hunting
 - Moose, elk, deer
- Bright stars
- Nature's playground
- Riverton is a gem – need to communicate it
- Only navigable river into town
- Canoe the river
- Walking bridge/trail
 - Will be expanded in 2 years
 - Development with community and Parks & Recreation
 - Supported by local organizations
- Easy drive from the City
- Ice fishing
 - People come from all over
- Main access to lake in winter
- Cross country skiing
- Snowmobiling
 - Hecla is a destination
- Lakes in the winters
- Natural Spaces
- River
- Parks
- Quality of environment
- Healthy waterways
- Lots of open spaces
- Lots of crown land
- Hunting and fishing
- Community pasture in the north
- Lakes, trees (forest), prairie – have it all – biodiversity
- Agriculture – soils and moisture
- Many underground streams and rivers
- Saturated soils – loss of crop production
- Drainage infrastructure lacking

Weaknesses

- Don't have machinery to clean the ice
- BBQ area owned by Catholic Church
 - Nice but dangerous location to get to
- Sewer and water is lacking in some areas
- Sidewalks
 - No sidewalk by school
 - Half of town doesn't have sidewalks
 - No crosswalk by seniors' residences
- Flooding
- Poor water management
 - Farmers want water off
 - Field drained = more water in Riverton
- Not dredging the river
- Not clearing the outlets
- Not recognizing impacts downhill

Opportunities

- Icelandic River
 - Walking trails
 - Winter activities
 - Kayaking, tubing, rafting, skating trail (1/4 mile), ice rink
- RV campground by Heritage Village
- Walking trails – have urban but could be naturalized
- Connect Silver and Arborg by train path (rail bed)
- Farmland that is not opened yet
- Working with colonies – reaching out for employees
- No place to dump fish guts
 - In other parts of the world they make fertilizer
- Harvesting algae
- Used gypsum rock can be used on soil
- Recreational tourism i.e. Ice fishing
- Fish by-product
 - Fertilizer (organic)
- Specialized crops i.e. Garlic
- Farmer's market

→ Dredging

Threats

→ Zebra mussels

→ Algae blooms

→ Farmers can't predict soil conditions

→ More crop losses to excess moisture than drought

→ Expensive to construct wetlands

→ Fish plant closure

- Smaller fishermen would be most impacted

→ Water quality

→ Drainage

→ Pesticides

→ Wastewater Arborg

→ Transport trucks carrying chemicals

POLITICAL

Strengths

→ Stability, continuity of council

→ Always trying to improve the town

→ Relationship with administration

- Administration and Public Works

→ Finances / budget

→ Cohesive and civil relationship on council

→ Servicing sharing agreement

→ Working relationship is relatively good between councils

→ Compromise

→ Hands-on approach

→ Close to the action

→ Close working relationship with 3 governments

→ Here for the good of the area

→ Partnership with Arborg

- Water and sewer
- PCH
- Garbage
- Fire

Weaknesses

- Low council turnovers
- Servicing sharing agreement
- Relationship with new municipal council is strained
 - If one place has it, why can't the other place have it too mentality
- Ward system pits wards against each other
- Province forcing amalgamation vs. municipalities discussing with each other – timeframe was too short
- Provincial Government is centralized in Winnipeg

Opportunities

- Vision for how agreements with municipalities can work together
- Shared services with municipality
- New provincial government
 - Relationship has always been good
- At large vote
- Need to start thinking regionally
 - Including Armstrong, Fisher, Arborg
- One large municipality – amalgamation with Arborg
- Representation around one table
- Where/how can we grow out tax base so taxes don't have to continue going up
- Maintain manufacturing
- Arborg needs to grow so the municipality can grow

Threats

- Joint agreements are not always fair

TECHNOLOGY/INFRASTRUCTURE

Strengths

- Utilities are good in town
- Internet is good in town
- Post office is busy
- Infrastructure is generally good – have kept up with maintenance
 - Water plant is renewed
 - Have 3-4 days of water supply if water goes down
 - Lagoon is good for at least 20 years capacity and room for growth
- Try to build new sidewalks every year

Weaknesses

- Public transportation (bus)

Opportunities

- E-commerce
 - There are a few e-commerce businesses in town
- Would like an upgraded bridge and an R-tac rated road.

LEGAL

Weaknesses

- No By-law enforcement officer
- Ward system in the RM

Opportunities

- Tax base around Arborg in the RM

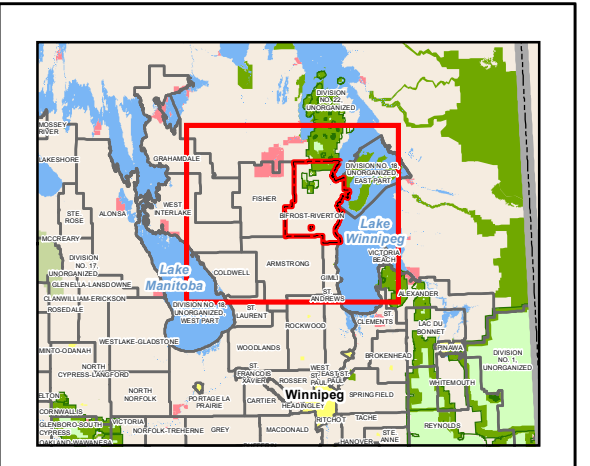
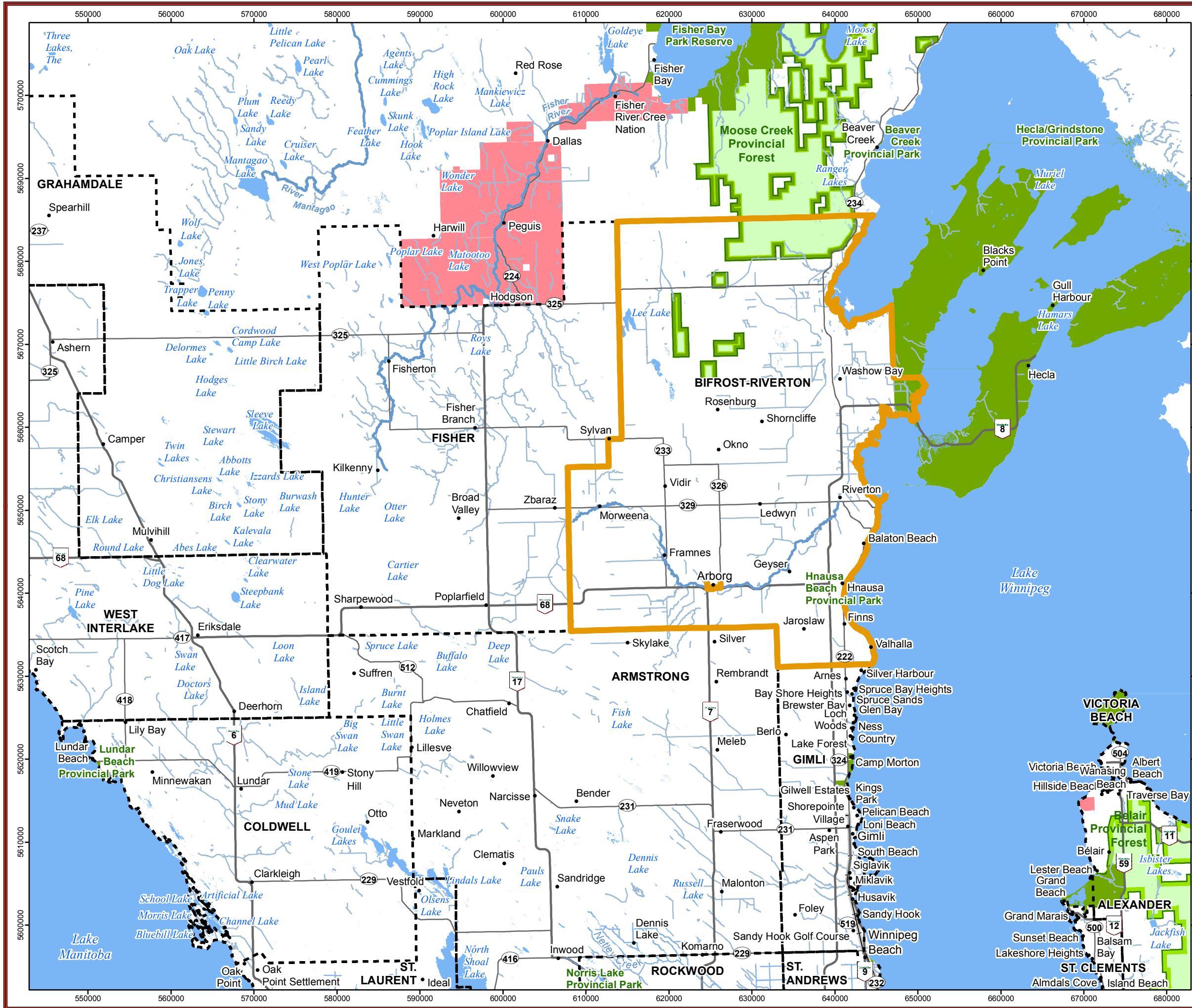
GENERAL

- Marketing
 - What are we doing?
 - What can we do?
 - Tradeshows
- Tourism Manitoba
 - Brochure?
- Some groups living in the RM are very independent but don't contribute to the community
- Potential to capture some of the business from peat moss mining – erosion blankets
- Riverton has a good base of commercial fishermen
 - Threatened by new Provincial Government to open the market and it might hurt the small fishermen
- U-Pick Strawberry Farm
- North of Riverton have an Organic Farm with integrity foods
- Green house
- Livestock has dropped
- Hog barn moratorium is over
 - Margin is tight
 - There is capacity in Brandon for processing
- 3 dairy farms
 - Rules and regulations have reduced the number of farms
 - Dairy is a controlled market

- There is a research facility 2.5 miles west of Arborg
 - MAFRI
 - PESAI
- Traditionally this area does well when the rest of the province has a drought year
- Lots of alfalfa seed
 - Sell leaf cutter bees to pollinate the alfalfa
 - Only a few places produce leaf cutter bees: Interlake, Prince Albert, Beausejour
- This area has been unique because it has been isolated from disease
 - This area is diversified
- Using Niverville model for PCH
 - RM needs to do research on how to work the agreement
- Cost of bringing Hydro to rural area will have an effect on rural development
- West of Arborg there is no natural gas
- Arborg cellular tower supplies up to Berens River but 10 miles north of the town there are dead zones
 - Extend length of cell tower in Riverton
- Drainage and roads are the biggest issues
- Many young families live in Gimli because they have daycare and housing
- Need affordable housing – under \$200,000

Appendix C

TABLE MAPS



RURAL MUNICIPALITY OF BIFROST-RIVERTON

Legend

- RM of Bifrost-Riverton
- Provincial Boundary
- Rural Municipality
- Place Name

Land Base

- First Nation
- National Park
- Provincial Park
- Provincial Forest
- Waterbody
- Watercourse

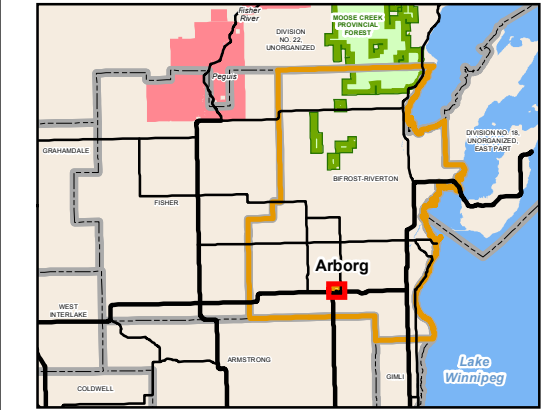
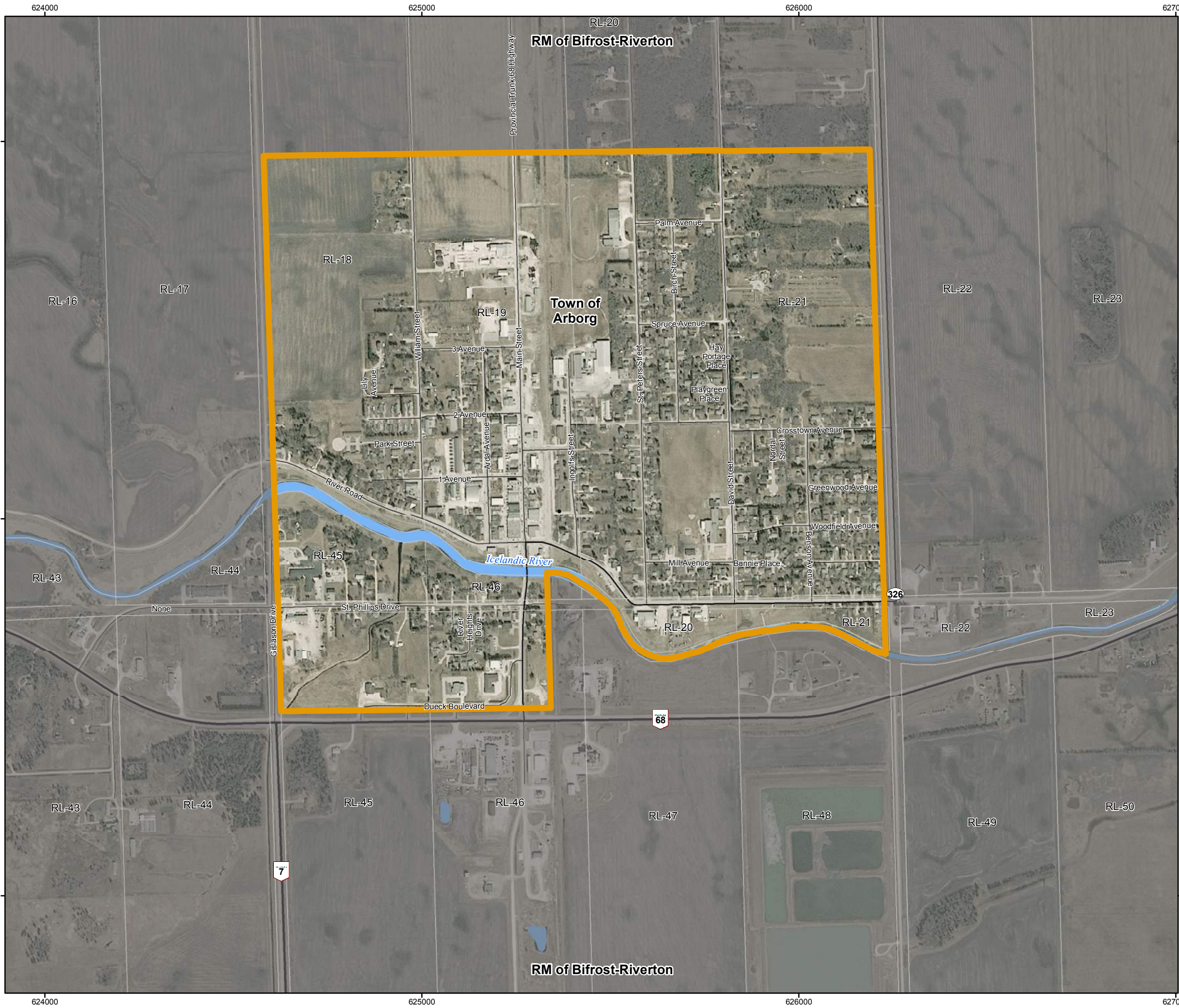
Road Type

- Provincial Trunk Highway
- Provincial Road
- Railway Line

DRAFT: For Discussion Purposes Only

Coordinate System: NAD 83, UTM Zone 14 N
 Data Source: MLI, NRCAN, WSP Group
 Date Created: April 18, 2016
 Revision Date: July 18, 2016

MAP 1
Study Area



RURAL MUNICIPALITY OF BIFROST-RIVERTON

Legend

- Town of Arborg
- Rural Municipality
- Parcel Boundary
- Place Name

Land Base

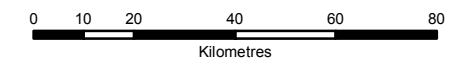
- First Nation
- Provincial Forest
- Waterbody
- Watercourse

Road Type

- Provincial Trunk Highway
- Provincial Road
- Local Street
- Railway Line

DRAFT: For Discussion Purposes Only

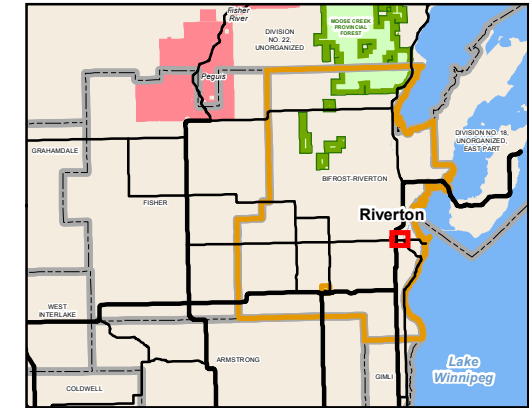
Coordinate System: NAD 83, UTM Zone 14 N
 Data Source: MLI, NRCAN, PFRA, WSP Group
 Imagery Source: BlackBridge Geomatics
 Date Created: April 18, 2016
 Revision Date: April 25, 2016



MAP 2

Town of Arborg





RURAL MUNICIPALITY OF BIFROST-RIVERTON

Legend

- Village of Riverton
- Rural Municipality
- Parcel Boundary
- Place Name

Land Base

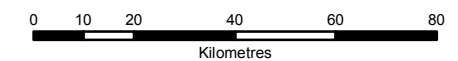
- First Nation
- Provincial Forest
- Waterbody
- Watercourse

Road Type

- Provincial Trunk Highway
- Provincial Road
- Local Street
- Railway Line

DRAFT: For Discussion Purposes Only

Coordinate System: NAD 83, UTM Zone 14 N
 Data Source: MLI, NRCAN, PFRA, WSP Group
 Imagery Source: BlackBridge Geomatics
 Date Created: April 18, 2016
 Revision Date: April 25, 2016



MAP 3

Village of Riverton



Appendix D

OPEN HOUSE NEWSPAPER ADVERTISEMENT

YOUR COMMUNITY, YOUR FUTURE!

Arborg Bifrost-Riverton Sustainable Community Action Plan

The Arborg-Bifrost Community Development Corporation (ABCDC) together with the Municipality of Bifrost-Riverton and the Town of Arborg have come together to create a Sustainable Community Action Plan. The project is just getting started and we would like you to be involved.

Join us at **Community Visioning Workshops** in the Village of Riverton or Town of Arborg in order to share your dreams and aspirations for a Sustainable Community and help identify the goals and actions needed to bring your vision to life. If you can't commit to attending one of the workshops, plan to stop by the concurrent **Public Open Houses** to view information about the project, speak to a project planner, and fill out a questionnaire.

Please **RSVP** to Brock Feenstra by Monday, June 27, 2016 at feenstrab@mmm.ca or 204-943-3178 if you would like to be involved in one of the community visioning workshops.



Growing Arborg Woke Open for Business
Arborg Bifrost Community Development Corporation

WSP | **MMM GROUP**

Community Visioning Workshops & Public Open Houses

JUNE 29, 2016

Plan to attend one of the following:

RIVERTON

Riverton Fellowship Circle
50 William Avenue, Riverton, MB

Community Visioning Workshop:
6:30 pm – 8:00 pm

Public Open House:
3:00 pm – 8:30 pm

..... OR

ARBORG

Arborg Bifrost Community Centre
409 Recreation Centre, Arborg, MB

Community Visioning Workshop:
6:30 pm – 8:00 pm

Public Open House:
3:00 pm – 8:30 pm

COME SHARE YOUR IDEAS!

Appendix E

OPEN HOUSE PRESENTATION BOARDS

WELCOME

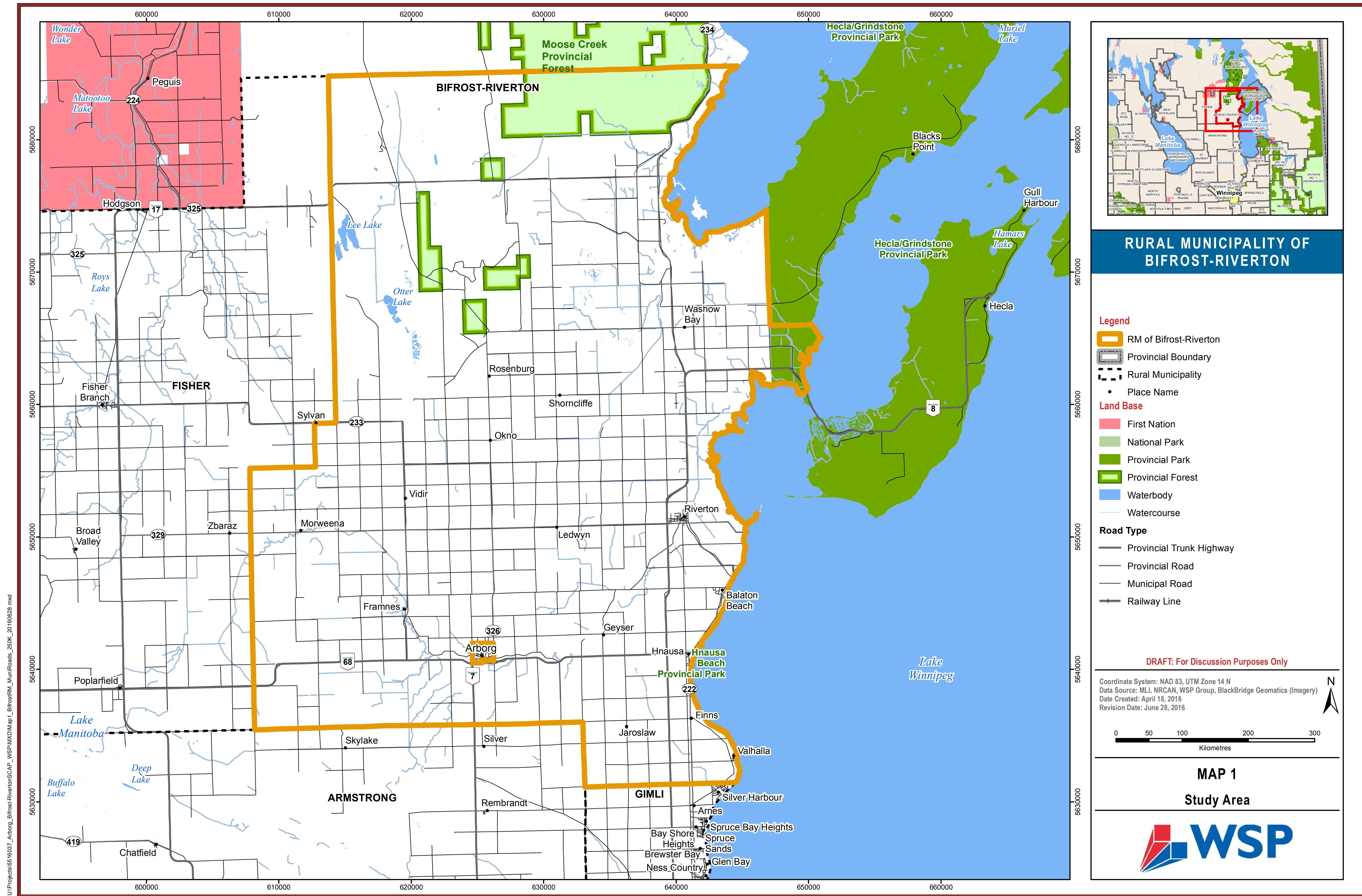
ARBORG BIFROST-RIVERTON SUSTAINABLE COMMUNITY ACTION PLAN

BOARDS OUTLINE

- 1 Study Area
- 2 Project Background
- 3 About
- 4 Purpose
- 5 Benefits
- 6 Timeline
- 7
- 8
- 9
- 10 What We Heard
- 11 Contact Information

- » Please use the sticky notes to post comments directly on the presentation boards.
- » Please complete and submit a comment sheet prior to leaving.

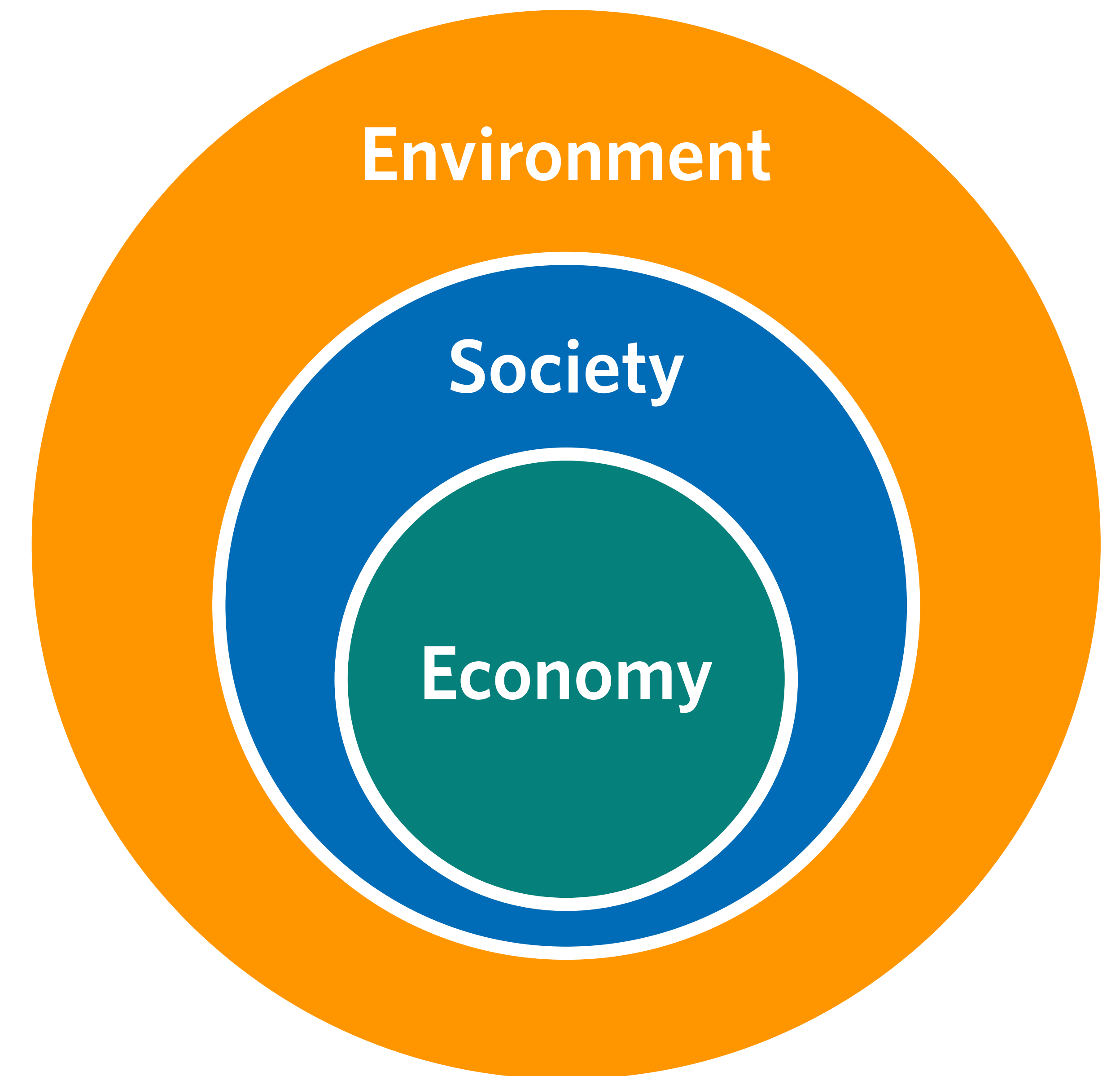
STUDY AREA



U:\Projects\5516037_Arborg_Bifrost-Riverton\SCAP_WSP\Map1\Map1_BifrostRM_MainRoads_280K_20160628.mxd

- » The Arborg-Bifrost Community Development Corporation (ABCDC) together with the Municipality of Bifrost-Riverton and the Town of Arborg have come together to create a Sustainable Community Action Plan and have engaged WSP|MMM Group to lead the planning process.
- » With the recent amalgamation, preparing a Sustainable Community Action Plan provides an opportunity for establishing a shared vision for the municipal partners and for working together in areas of common interest.
- » The ultimate goal is to help Arborg Bifrost-Riverton strengthen its position as one of the most self-reliant, progressive, and economically stable regions of the province.
- » This plan will contribute to the development of a cohesive approach to coordinating the different initiatives, plans, programs and activities currently underway in the region.
- » The plan is funded in part by the Federation of Canadian Municipalities (FCM) Green Municipal Fund.

- » A Sustainable Community Action Plan is a long term plan developed in order to establish direction for future sustainable practices aimed at enhancing the quality-of-life and well-being of current and future generations.
- » The plan is based on a model of sustainability and integrated community planning. Sustainability objectives and existing plans and initiatives are integrated into a common vision with goals and actions aimed at its successful implementation.
- » The plan will reflect the region's ideas and priorities and can be used to guide short, medium, and long-term decision making.



- » The purpose of the Arborg Bifrost-Riverton Sustainable Community Action Plan is to evolve a coordinated approach to sustainable growth and development across the region.
- » This will be accomplished by:
 - Actively seeking the opinion and involvement of interested and/or affected individuals in order to gather information, formulate planning policy, and create a sense of pride and ownership.
 - Establishing a clear vision for the sustainable future of the region.
 - Coordinating existing strategies, initiatives and actions, to provide a harmonized approach to growth and development.
 - Identifying strategies, initiatives, and actions which a community can implement in moving towards a more sustainable way of growing.
 - Identifying targets for measuring progress towards achieving specific goals and objectives within the sustainability areas.

A Sustainable Community Action Plan addresses:

- » Community cohesion, livability, health and quality-of-life.
- » Housing requirements and improvements to community services and facilities.
- » Growth management (environmentally and fiscally sustainable).
- » Environmental stewardship for the health and enjoyment of future generations.
- » Business development, job creation and training, economic resiliency, and self-sufficiency.
- » Identification of implementation goals, actions, timeframes, responsibilities, and progress metrics.
- » Identification of partnerships and opportunities for coordination and cooperation.
- » And more...



- » Components: socio-cultural aspects of community, quality-of-life, life-style characteristics, variety of services and facilities that support “community” and local society.

Strengths/Opportunities

- » Strong sense of community: shared heritage (arts and culture), community service organizations, volunteer spirit, faith-based communities.
- » Increasing socio-cultural diversity.
- » Community services and facilities in the areas of parks and recreation, health care, and schools.
- » Quality-of-life, good place to raise a family.
- » Communities offer an adequate range of services to support day-to-day living.
- » Anything to add?

Weaknesses/Threats

- » Access to medical practitioners for higher level services, care and treatment.
- » Public transportation.
- » Housing (for all age groups and life cycle stages, tenure types and income levels).
- » Variety of activities for all age groups.
- » Increasing socio-cultural segregation/isolation.
- » Local politics, leadership, direction.
- » Sustaining population growth, retaining youth.
- » Anything to add?

Please use the sticky notes to share your ideas for improving the social sustainability of Arborg Bifrost-Riverton.

- » Components: local economy, business environment, economic development opportunities, regional cooperation and marketing, support for small-business and entrepreneurialism.

Strengths/Opportunities

- » Diverse economy underpinned by agriculture; home-grown industries with global focus.
- » Arborg, regional trade centre; public sector employment; expanding services in support of seniors.
- » Agencies and groups working to support the business community in areas such as worker training, business development, marketing the region, loans to small businesses, and identifying/exploring opportunities for economic development.
- » BASIC; efforts aimed at improving land drainage while diversifying and strengthening agriculture.
- » Natural environment, year-round tourism, cottage development, services to visitors, day-trippers and seasonal residents.
- » Renewable resource development; coarse fish processing; First Nations collaboration/cooperation.
- » Anything to add?

Weaknesses/Threats

- » Lack of housing diversity and affordability.
- » Proximity to Winnipeg, loss of trade, loss of small businesses, on-line shopping.
- » Roads, infrastructure (water), development-ready lands, lack of natural gas to Okno.
- » Retaining and training workers.
- » Spotty cell service and limited high-speed internet.
- » Excess moisture, poor drainage.
- » Anything to add?

Please use the sticky notes to share your ideas for improving the economic sustainability of Arborg Bifrost-Riverton.

- » Components: Sustainable development, conservation and protection of natural environment and ecologically sensitive areas, air and water quality, disposal of solid and septic wastes, recycling, community adaptation to climate change impacts, GHG reduction.

Strengths/Opportunities

- » Abundant natural resources and quality and diversity of the natural environment.
- » Icelandic River and Lake Winnipeg.
- » Opportunities for outdoor recreation and eco-tourism or experiential tourism.
- » Clean air.
- » Impact of climate change vis-à-vis crop diversification.
- » Anything to add?

Weaknesses/Threats

- » Excessive moisture, land drainage and water management.
- » Loss of farmland, wetland preservation/restoration.
- » Icelandic River sedimentation & impact on water conveyance, fishing and navigation.
- » Impacts of runoff on surface water quality.
- » Lake Winnipeg water quality, algae blooms, impact on fishing and tourism.
- » Invasive species like Zebra mussels.
- » Anything to add?

Please use the sticky notes to share your ideas for improving the social sustainability of Arborg Bifrost-Riverton.

On behalf of the project team, thank you for your participation.

Your input will be used to assist in the development of the Sustainable Community Action Plan

To receive project updates and invitations to future engagement events, please contact:
Ross Mitchell, 204-470-4802, ross.mitchell@wspgroup.com, or
Brock Feenstra, 204-943-3178, feenstrab@mmm.ca

Please complete and submit a comment sheet prior to leaving or by submitting it to the Town of Arborg or Municipality of Bifrost-Riverton office.

Appendix F

WORKSHOP AND OPEN HOUSE QUESTIONNAIRE

ARBORG BIFROST-RIVERTON SUSTAINABLE COMMUNITY ACTION PLAN
PUBLIC OPEN HOUSE & COMMUNITY VISIONING WORKSHOP
COMMUNITY VISION & GOAL SETTING QUESTIONNAIRE
JUNE 29, 2016

Introduction: The Arborg Bifrost-Riverton Sustainable Community Action Plan will help guide future growth and community improvement in the Town of Arborg and Municipality of Bifrost-Riverton. By hosting this public open house and visioning workshop, we hope to obtain information and ideas from local residents, landowners, and business owners as to what the region's priorities and ideas are for working towards a more sustainable future in relation to the region's environment, economy and society. The Arborg-Bifrost Community Development Corporation (ABCDC), Town of Arborg, and Municipality of Bifrost-Riverton appreciates the time and effort of all those who participate in this community engagement process.



What is Community Sustainability?

Sustainability is often expressed as meeting the needs of the current generation without compromising the needs of future generations. Municipalities face their own, unique challenges related to community sustainability planning, which involves an exploration and examination of a community's economy, society, and environment. An example of economic sustainability is a community that has a strong economic base and business development opportunities for local job creation. An example of socio-cultural sustainability is a community with adequate community services and facilities, like housing, education, health care and recreation, for its population size and demographic profile, and one that provides its residents with opportunities for community involvement and social interaction. To be environmentally sustainable, a community should take measures to protect and enhance its natural environment for the health and enjoyment of its residents.

Using the sustainability components of economy, society, and environment, the following questions encourages you to think about the kind of community you would like Arborg, Bifrost-Riverton to be in the future, and how community leaders and residents can collaborate in helping to bring that vision to fruition.

COMMUNITY AND STUDY AREA MAPS:

We have provided maps of the Planning Area and the Communities of Arborg and Riverton. Please use the maps and markers provided to identify any issues or to convey your plans and ideas for community improvement.

ARBORG BIFROST-RIVERTON SUSTAINABLE COMMUNITY ACTION PLAN
PUBLIC OPEN HOUSE & COMMUNITY VISIONING WORKSHOP
COMMUNITY VISION & GOAL SETTING QUESTIONNAIRE
JUNE 29, 2016

Q5) Why would people want to live in Arborg Bifrost-Riverton in 2035? What would residents value?
 Attach a “value” to the following Components of Community and add others as you see fit.

Community Component:	Value Attachment		
	Lower	Medium	Higher
More opportunities for country living			
More opportunities for town living			
Serviced land for new housing and businesses			
Public investment in roads and bridges			
Public investment in sewer and water services			
More community involvement in decision making			
Economic diversification & new businesses			
Collaboration with First Nations Communities			
Agricultural diversification			
Job training			
Recreation and leisure opportunities			
Community social events and celebrations			
Opportunities for community volunteerism			
Developing sources of renewable energy			
Water quality			
Solid waste reduction and recycling			
Air quality & reducing Greenhouse Gas emissions			
Transportation service (for people without cars)			
Community resiliency to Climate Change impacts			
Housing variety			
Housing affordability			
Health services			
Natural places & environmentally sensitive spaces			
Surface water management & land drainage			
Recreational services			
Education services			
Tourism			
Celebrations of community culture and heritage			
Did we miss any Community Components?			

ARBORG BIFROST-RIVERTON SUSTAINABLE COMMUNITY ACTION PLAN
PUBLIC OPEN HOUSE & COMMUNITY VISIONING WORKSHOP
COMMUNITY VISION & GOAL SETTING QUESTIONNAIRE
JUNE 29, 2016

How adequate do you feel the following services currently are in Arborg Bifrost-Riverton?

Community Service or Facility:	Level of Service			
	Poor	Adequate	Good	Not Sure
Housing for young people starting out				
Housing for families				
Housing for workers				
Local roads & bridges				
Regional land drainage facilities				
Municipal wastewater service collection/treatment				
Municipal water supply/treatment/distribution				
Land for urban growth & development				
Garbage collection & recycling				
Land for cottage development				
Local retail and commercial services				
Local personal care services				
Facilities for indoor recreation				
Facilities for outdoor recreation				
Facilities for tourists				
Services to newcomers and immigrants				
Health facilities				
Health services				
Facilities and activities/programming for Youth				
Facilities and activities/programming for Families				
Facilities and activities/programming for Seniors				
Public schools				
High schools				
Educational programming/curricula in general				
Adult education and retraining				
Immigrant services and assistance				
Community events and celebrations				
Opportunities for community volunteering				
Community cultural facilities				
Mental health and counselling services for youth				
Mental health and counselling services for families				
Job opportunities for youth				
Did we miss any services or facilities?				

ARBORG BIFROST-RIVERTON SUSTAINABLE COMMUNITY ACTION PLAN
PUBLIC OPEN HOUSE & COMMUNITY VISIONING WORKSHOP
COMMUNITY VISION & GOAL SETTING QUESTIONNAIRE
JUNE 29, 2016

Q9) What are the top five actions that could be taken to achieve the best Arborg Bifrost-Riverton?

1. _____
2. _____
3. _____
4. _____
5. _____

PLEASE FEEL FREE TO ADD ANY FINAL COMMENTS

Thank You for your participation in the Sustainable Community Action Plan.

Please hand in your questionnaire before leaving.

Appendix G

YOUTH QUESTIONNAIRE

WHAT IS **YOUR** VISION FOR A BETTER, MORE SUSTAINABLE COMMUNITY?



The Rural Municipality of Bifrost-Riverton and the Town of Arborg have come together to prepare a Sustainable Community Action Plan. This project needs ideas for making your community a better place to live both now and in the future. A Sustainability Plan tries to improve the way people live on the earth and interact with the natural environment that supports us. Here's a great saying to help you understand what sustainability is all about - 'Leave your part of the world better than you found it, take no more from the earth than you need to survive, and try to live in harmony with the natural environment that we share with all living things.'

Your class has been asked to participate in the project by completing a few activities that will help you share your ideas for making Arborg and Bifrost-Riverton a better place to live.

ACTIVITY #1:

What kinds of places are in my community?

Time: 15 minutes

Materials: "What kinds of places are in my community" worksheet; pen/pencil/markers

Instructions: This activity will get you thinking about places in your community and how they make you feel. Each person has a sheet in front of them with descriptive words on it. Think about places in your community that match those descriptions and fill in the worksheet.

Upon completion get one person per word to share their idea with the class.

Prompting Questions: What place in the Bifrost-Riverton Arborg area do you think is beautiful? Do you think the river or park is beautiful? Remember, we are thinking of places within our community. What place in the Bifrost-Riverton Arborg area do you think is fun? Do you have fun at the library or the park? Remember, we are thinking of places within our community.

ACTIVITY #1:

What kinds of places are in my community?

Friendly	Beautiful
Interesting	Fun
Boring	Exciting
Old	Ugly
Safe	Dangerous
Natural	Depressing

ACTIVITY #2:

What I like about growing up here.

Time: 20 minutes

Materials: “What I like about growing up here” worksheet; crayons/markers

Instructions: Now that you have started thinking about your community, we want to learn what you like about growing up in the Arborg and Bifrost-Riverton area. Think about the different places where you have fun, the places you think are beautiful, or about the different activities you participate in. Using the worksheet, draw a picture of a place or thing or some activity that makes growing up here fun.

Upon completion ask for a few people to share their ideas with the class.

Prompting Questions: What places do you visit? Are they close to home? Are there any natural habitats or open spaces that you like to visit?

ACTIVITY #3:

How can we make our community better?

Time: 20 minutes

Materials: “How can we make our community better” worksheet; crayons/markers

Instructions: What are your ideas for making your community an even better place to live? Write your ideas down on the worksheet.

Upon completion ask for a few people to share their ideas with the class.

Prompting Questions: How can you make your community more fun, safer, better? What activities would you like to have in your community? When you grow-up, or are older, where do you want to work? Where do you want to live? What type of shop or stores would you like to shop in?